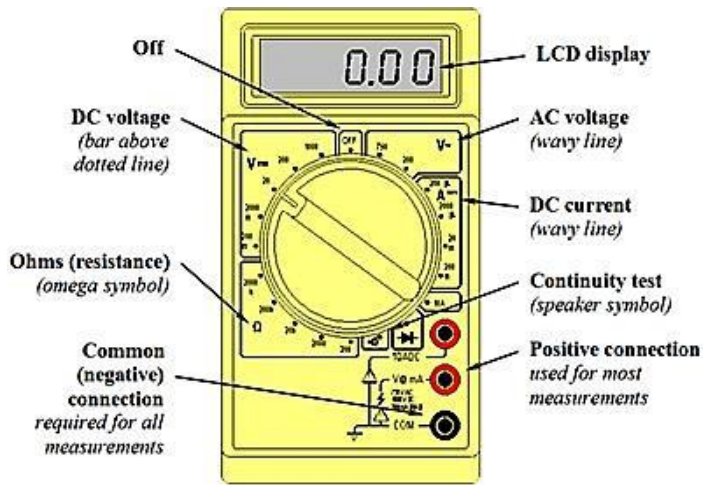


Multimeter

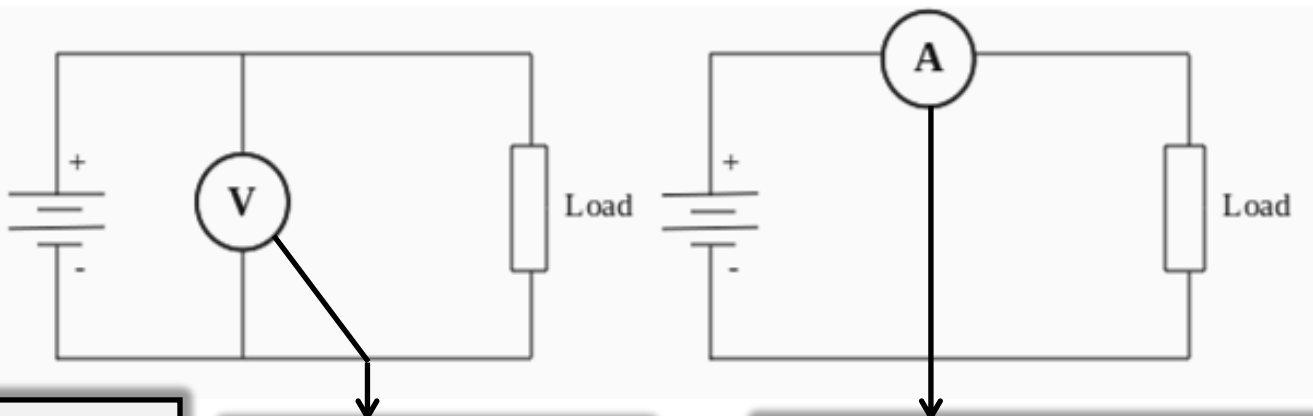
A multimeter is a vital tool used in Electrical Engineering. It consists of many electrical measuring functions such as measuring voltage, current, and resistance.



Parts & Settings

- **LCD Display** – displays all the information.
- **AC Voltage** – used to measure AC voltage.
- **DC Voltage** – used to measure DC voltage.
- **DC Current** – used to measure DC current.
- **Resistance** – used to measure resistance.
- **Continuity Test** – used to see if a connection between two points exists.
- **Positive Connection**
- **Negative Connection**

Measuring Voltage, Current, & Resistance:



Resistance

When measuring resistance across a load, all sources must be turned off and the multimeter must be connected in parallel across the load.

Voltage

When measuring the voltage across a component(s), the multimeter must be connected in parallel with the component(s).

Current

When measuring the current across a component(s), the multimeter must be connected in series with the component(s).